

Stone Ridge Village

A Pad requires "High Density" setback requirements due to the number of homes within 1,000ft radius of wellhead cellar.

Legend

- 350ft Radius from Wellheads
- 500ft Radius from Wellheads
- 1,000ft Radius from Wellheads

For Safety Setback Details Visit:
<http://cogcc.state.co.us/> click on Rules
Click on 600 Series Safety Regulations

BMC "A" Pad

House
529ft (South row of wellheads)

House
540ft (South row of wellheads)

MONUMENT TR

Monument Creek



Antero Resources Piceance Corporation

Piceance Basin, Colorado

Garfield County

Battlement Mesa Natural Gas Project

A Pad Distances



July 30, 2009

RAINBOW TR

RAINBOW CT



Antero Resources Piceance Corporation

Piceance Basin, Colorado

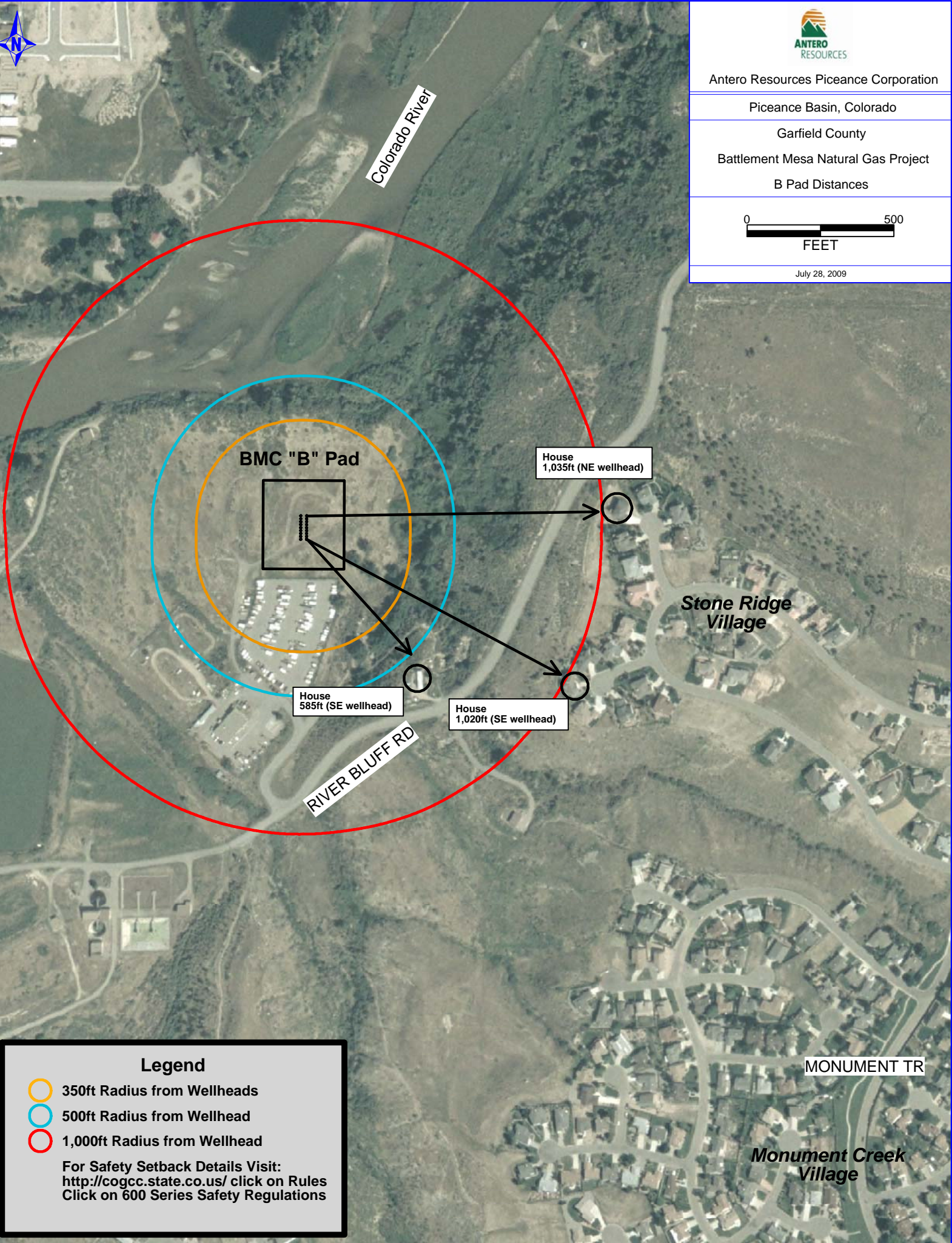
Garfield County

Battlement Mesa Natural Gas Project

B Pad Distances



July 28, 2009



BMC "B" Pad

House
1,035ft (NE wellhead)

*Stone Ridge
Village*

House
585ft (SE wellhead)




House
1,020ft (SE wellhead)

RIVER BLUFF RD

MONUMENT TR

*Monument Creek
Village*

Legend

-  350ft Radius from Wellheads
-  500ft Radius from Wellhead
-  1,000ft Radius from Wellhead

For Safety Setback Details Visit:
<http://cogcc.state.co.us/> click on Rules
Click on 600 Series Safety Regulations



Antero Resources Piceance Corporation

Piceance Basin, Colorado

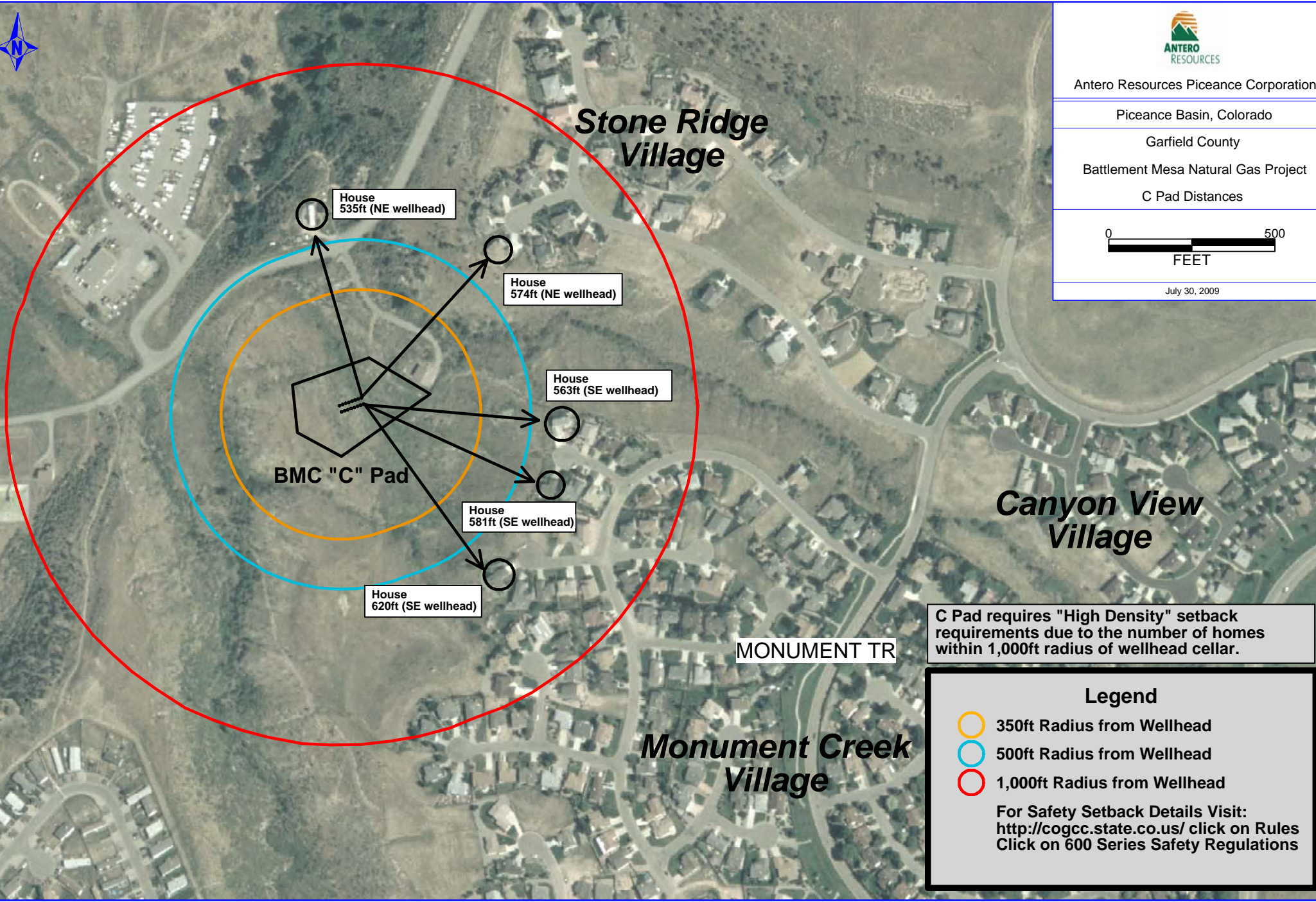
Garfield County

Battlement Mesa Natural Gas Project

C Pad Distances






July 30, 2009



C Pad requires "High Density" setback requirements due to the number of homes within 1,000ft radius of wellhead cellar.

Legend

-  350ft Radius from Wellhead
-  500ft Radius from Wellhead
-  1,000ft Radius from Wellhead

For Safety Setback Details Visit:
<http://cogcc.state.co.us/> click on Rules
Click on 600 Series Safety Regulations



Antero Resources Piceance Corporation

Piceance Basin, Colorado

Garfield County

Battlement Mesa Natural Gas Project

D Pad Distances



July 30, 2009

Colorado River

Apartments
1,260ft (NE wellhead)

BMC "D" Pad




House
540ft (SW wellhead)

House
545ft (SW wellhead)

Stone Ridge
Village

D Pad requires "High Density" setback requirements due to the number of homes within 1,000ft radius of wellhead cellar.

Legend

-  350ft Radius from Wellheads
-  500ft Radius from Wellheads
-  1,000ft Radius from Wellheads

For Safety Setback Details Visit:
<http://cogcc.state.co.us/> click on Rules
Click on 600 Series Safety Regulations

Canyon View
Village



BATTLEMENT PKWY



Antero Resources Piceance Corporation

Piceance Basin, Colorado

Garfield County

Battlement Mesa Natural Gas Project

E Pad Distances



July 30, 2009

Valley View Village

STONE QUARRY RD

St. John Middle School

BMC "E" Pad






House 1,219ft (SW wellhead)

House 860ft (SW wellhead)

House 730ft (SW wellhead)

Legend

-  350ft Radius from Wellheads
-  500ft Radius from Wellheads
-  1,000ft Radius from Wellheads

For Safety Setback Details Visit:
<http://cogcc.state.co.us/> click on Rules
Click on 600 Series Safety Regulations



Antero Resources Piceance Corporation

Piceance Basin, Colorado

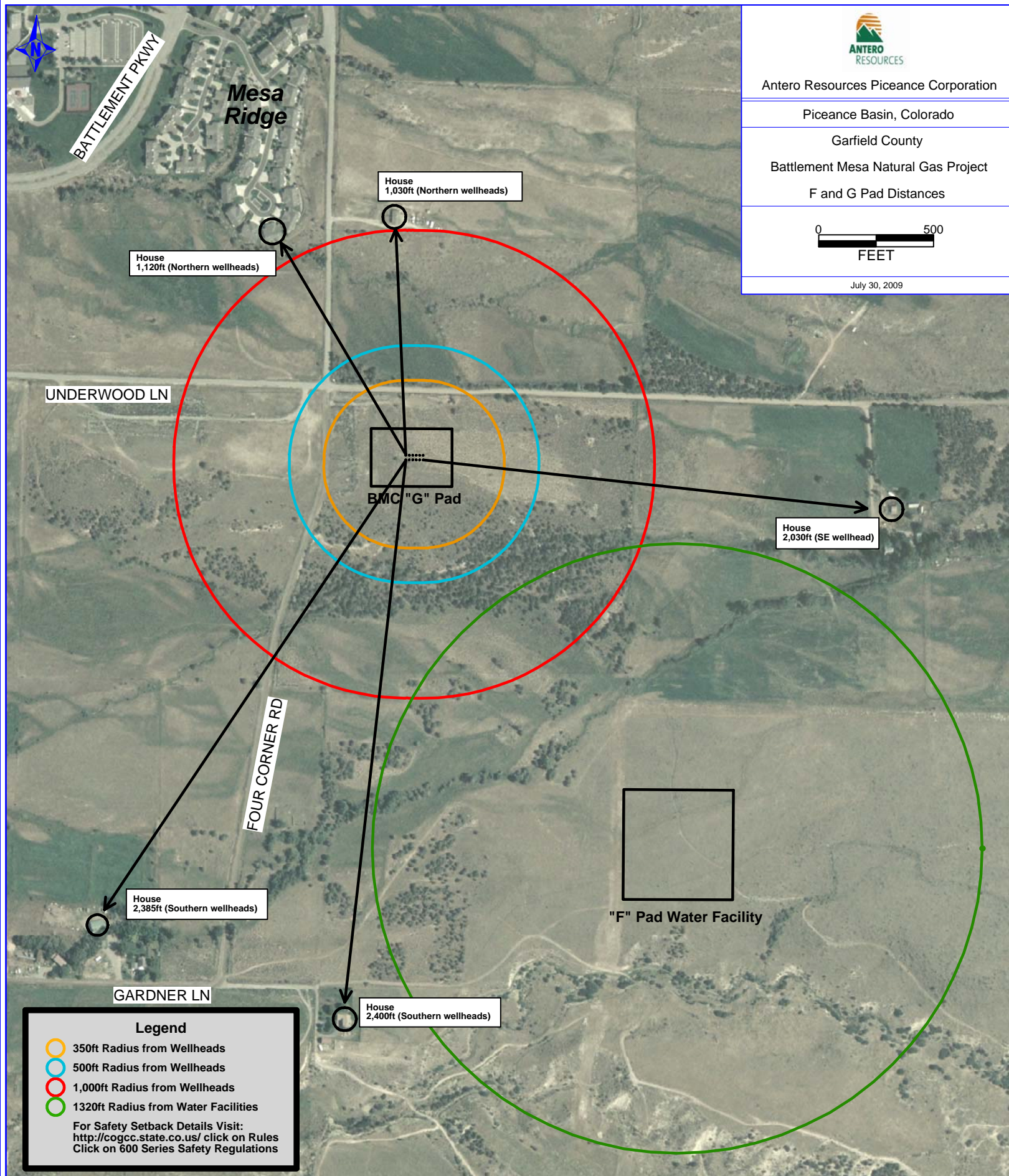
Garfield County

Battlement Mesa Natural Gas Project

F and G Pad Distances



July 30, 2009



House 1,120ft (Northern wellheads)

House 1,030ft (Northern wellheads)

House 2,030ft (SE wellhead)

House 2,385ft (Southern wellheads)

House 2,400ft (Southern wellheads)

Legend

- 350ft Radius from Wellheads
- 500ft Radius from Wellheads
- 1,000ft Radius from Wellheads
- 1,320ft Radius from Water Facilities

For Safety Setback Details Visit:
<http://cogcc.state.co.us/> click on Rules
Click on 600 Series Safety Regulations



SPENCER PKWY

BATTLEMENT PKWY

SIPPRELLE DR

Church
3,020ft (NW wellhead)

BMC "K" Pad



House
2,600ft (NW wellhead)

House
2,250ft (Southern wellhead)


New School
Construction

Mesa
Vista

Legend

-  350ft Radius from Wellheads
-  500ft Radius from Wellheads
-  1,000ft Radius from Wellheads

For Safety Setback Details Visit:
<http://cogcc.state.co.us/> click on Rules
 Click on 600 Series Safety Regulations




Antero Resources Piceance Corporation

Piceance Basin, Colorado

Garfield County

Battlement Mesa Natural Gas Project

K Pad Distances



0 500
FEET

July 28, 2009



Legend

- 350ft Radius from Wellheads
- 500ft Radius from Wellheads
- 1,000ft Radius from Wellheads

For Safety Setback Details Visit:
<http://cogcc.state.co.us/> click on Rules
 Click on 600 Series Safety Regulations



Antero Resources Piceance Corporation

Piceance Basin, Colorado

Garfield County

Battlement Mesa Natural Gas Project

L Pad Distances



July 28, 2009

Battlement Creek Village

Battlement Creek House
 1,056ft (NE wellhead)

Golf Course Club House
 1,190ft (NW wellhead)

Golf Course Maintenance Building
 910ft (NW wellhead)

Church
 1,640ft (NW wellhead)

BMC "L" Pad

Driving Range

Church
 1,815ft (SE wellhead)

GRAVEL PIT RD

W BATTLEMENT PKWY

SPENCER PKWY



Antero Resources Piceance Corporation

Piceance Basin, Colorado

Garfield County

Battlement Mesa Natural Gas Project

M Pad Distances



July 30, 2009

N BATTLEMENT PKWY

W BATTLEMENT PKWY

GRAVEL PIT RD

Willow Creek Village

Fairways Village

Eagle's Point Village

House 745ft (NW wellhead)

House 1,040ft (SW wellhead)

House 1,290ft (SE wellhead)

BMC "M" Pad

Legend

- 350ft Radius from Wellheads
- 500ft Radius from Wellheads
- 1,000ft Radius from Wellheads

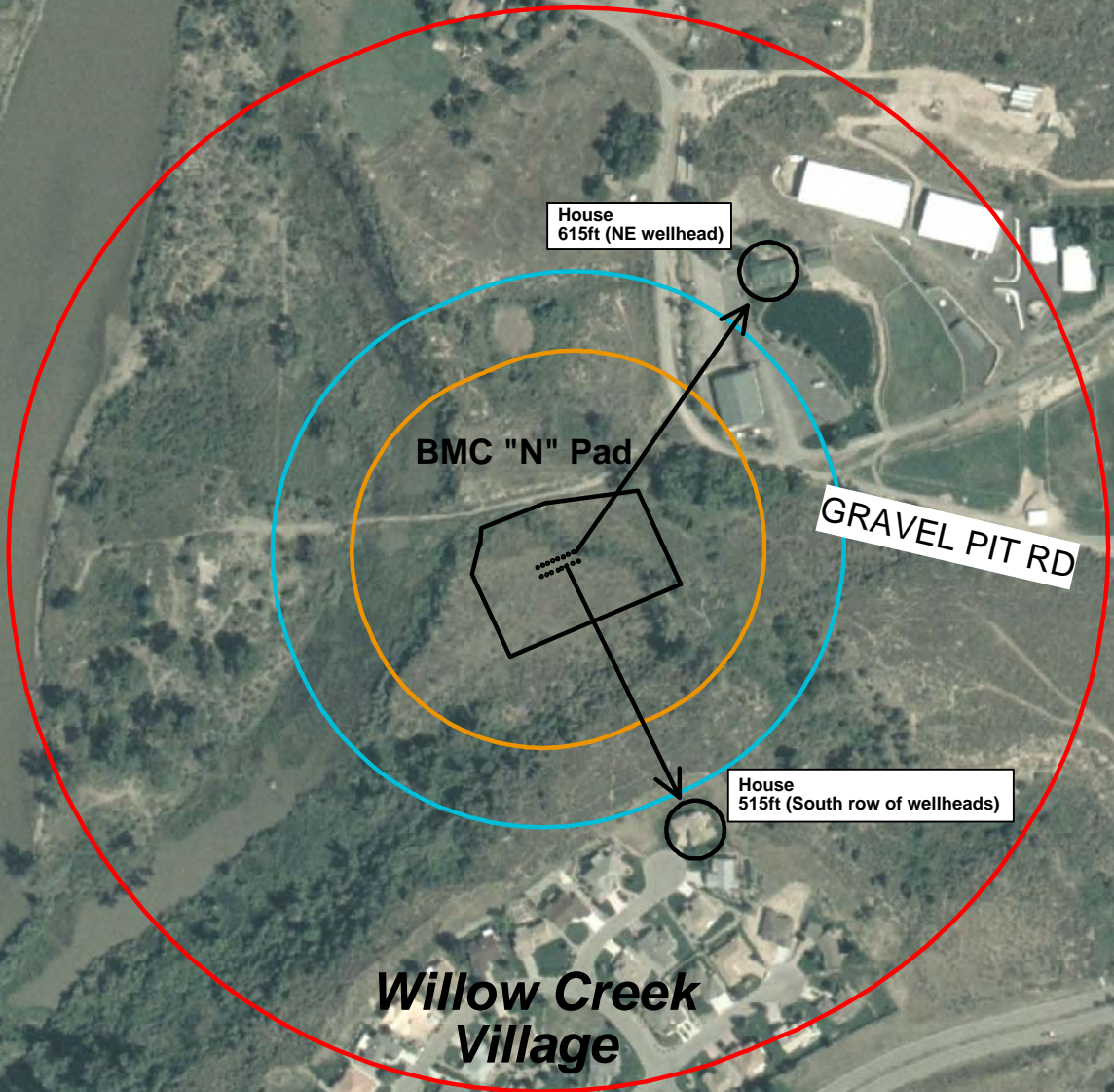
For Safety Setback Details Visit: <http://cogcc.state.co.us/> click on Rules Click on 600 Series Safety Regulations



N BATTLEMENT PKWY

W BATTLEMENT PKWY

Colorado River



House 615ft (NE wellhead)

BMC "N" Pad

GRAVEL PIT RD




House 515ft (South row of wellheads)

Willow Creek Village

Fairways Village

N Pad requires "High Density" setback requirements due to the number of homes and the educational facility within 1,000ft radius of wellhead cellar.

Legend

-  350ft Radius from Wellheads
-  500ft Radius from Wellheads
-  1,000ft Radius from Wellheads

For Safety Setback Details Visit:
<http://cogcc.state.co.us/> click on Rules
Click on 600 Series Safety Regulations



Antero Resources Piceance Corporation

Piceance Basin, Colorado

Garfield County

Battlement Mesa Natural Gas Project

N Pad Distances



July 30, 2009